

## Data Sheet

### Features

#### View and control student computers in a networked classroom

Adapted for use in small classrooms

#### Share Instructor's screen with students in the classroom, or a screen of one of students with others

Keep discipline in the classroom: restrict access to web, applications, system settings and hardware

#### Manage student computers right from the teacher's seat: turn on, shutdown and reboot computers; manage programs and applications remotely

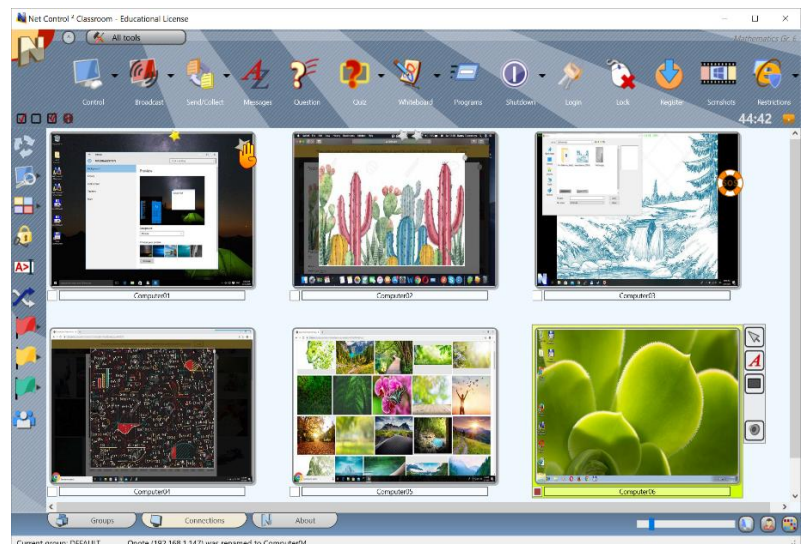
Send text messages, graphics, screenshots in a few clicks; initiate text and voice chats

#### Get instant statistics on student knowledge with Polls and Quizzes

Use built-in lesson management tools: planner, lesson and grade journals.

#### Extend functionality and customize the software with macros and custom profiles.

Share your ideas with students using Virtual Whiteboard



### Classroom management software

Net Control<sup>2</sup> SmallClass is classroom management software for local networks, has a 20-year history of development and use. Created by teachers and for teachers, used in thousands of locations worldwide.

Powerful, flexible and cost-effective solution for education customers.

Helps teachers to use lesson time more effectively, improves quality of the teaching process, makes it more visual and interesting to students.

# Why

## Net Control 2 SmallClass?

**Specially designed for the sphere of education, provides access to more than 150 various teaching, monitoring and controlling features.**

Easy in use and installation. Simple installation process takes less a minute to set up the software on a computer.

**Flexible in adaptation for different use scenarios.**

Low price and simple licensing model. Classroom License covers one instructor computer and up to 13\* student computers. No subscriptions. All licenses are always permanent.

**Comprehensive support and free maintenance period included.**

# System requirements

**Microsoft Windows** 11, 10, 8, Windows Server 2022 – 2008;  
**Linux:** Ubuntu 20-24; RPM and DEB packages available.  
**Android** mobile clients.

**Virtual machines** that support the above specified operating systems as a "guest" OS, including **Microsoft Hyper-V Server, VMWare, Oracle VirtualBox, nComputing, Citrix, Wyse** virtual machines.

**Terminal Server ("thin") clients** of Windows Terminal Server/Remote Desktop Server, nComputing, Wyse and other terminal clients that use Windows user session virtualization.

**Network: Ethernet or wireless local network** 100 Mbit/sec and higher. Other local network realizations that support TCP/IP v4 and UDP protocols and required network bandwidth.

**Bandwidth:** in average 0.2 MBit/s per client, depending on the operations used.

**CPU and RAM:** use the recommended by the manufacturer of the operating system hardware configuration for this OS version.

**Disk space:** at least 500 Mbytes of free disk space per installation.

# Technical support and maintenance

**All licenses are permanent** for the purchased version of the software. Net Control 2 SmallClass licenses include two years of free upgrades and maintenance from the moment of purchase. Do not require recurring fees or payments. Optional paid maintenance packages are available with 30-50% discounts from the license price (<https://www.netcontrol2.com/upgrade>).

**The technical support is included and free without time limitations.** After the free maintenance period we may be limited in ways of modifying of the older versions program code.

**Trial and evaluation licenses are always available by request** on our website: <https://www.netcontrol2.com/downloads>

Any your questions are always welcome at <http://ask.netcontrol2.com>

**<https://www.netcontrol2.com>**

\* license limits vary by region, software version, and active promotions. For the latest details, please visit our website: <https://www.netcontrol2.com/smallclass>